



Ascent™ Max

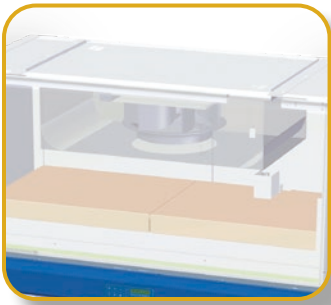
Containment Ventilated Enclosure

- *The Safe, Energy-Efficient, and Easy to Clean PEC*
- *For USP 800 Hazardous Non-Sterile Compounding*



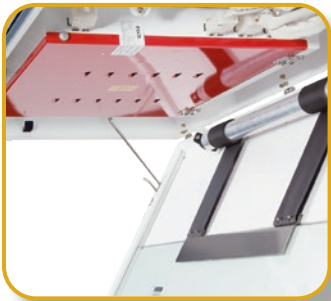
Esco Ascent™ Max Containment Ventilated Enclosure

Provides Operator and Environment Protection



Centrifugal Fan

- *Permanently lubricated fans are energy efficient with external rotor motor design that reduces operating costs*
- *Extremely low noise and low vibration level*



Robust Hood Construction

- *Key components including fluorescent lamps, motor capacitor, electrical harness, electronic ballast, and switch control are mounted outside the airstream and away from contaminated areas to permit easy service*



HEPA Filter

- *Diffusion technology to ensure even filter loading*
- *Efficient perimeter clamping ensures no leakage as well as allows easy filter change procedure*



Rear Walls

- *Electro galvanized steel wall for superior durability*



Work Top

- *Phenolic resin worktop*
- *Easy to clean, corrosion and chemical resistant makes it an ideal worktop for experiments*



Ascent™ Max Containment Ventilated Enclosure, Model ADC-4F2 (Shown with STA)



Sentinel™ Silver Microprocessor Control, Alarm System

- Advanced microprocessor control supervises operation of all hood functions. Temperature-compensated air velocity sensor monitors airflow. 24-hour clock and blower run hour meter are standard.

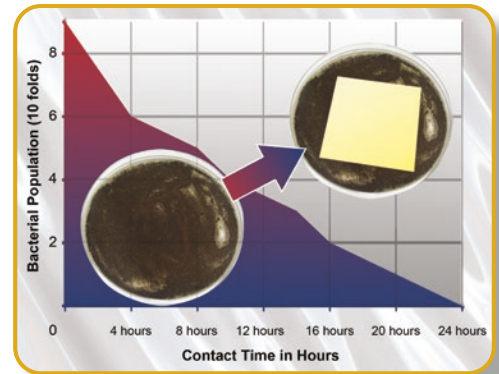
Hinged Polycarbonate Sash

- Allows easy access and easy cleaning



ISOCIDE™ Powder Coat

- Silver-ion impregnated powder coat
- Inhibit microbial growth to improve safety



Support Stand

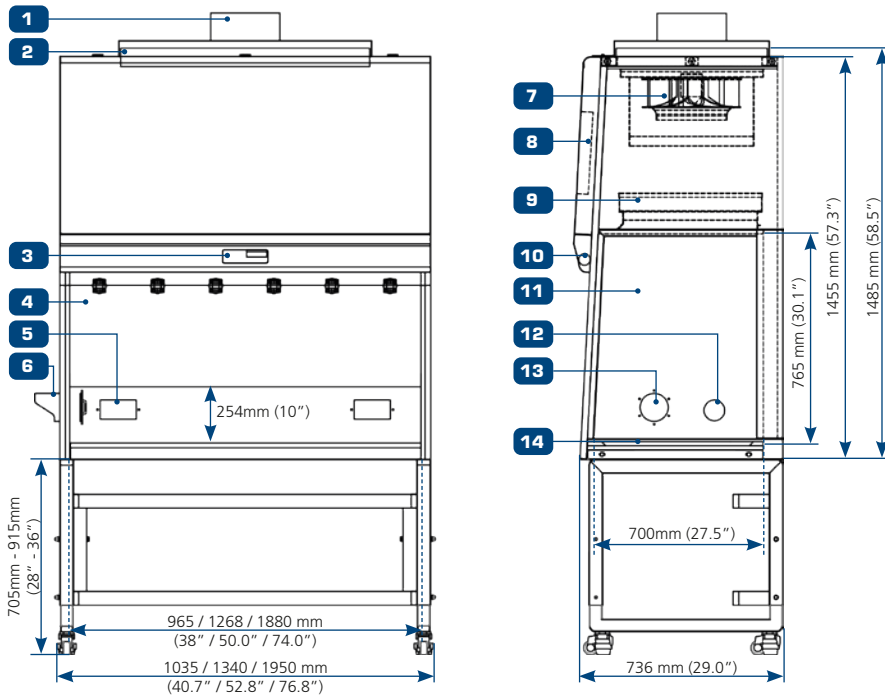
- Made from durable material to support a maximum weight of 500-600 Kg (1102 - 1322 lbs)



Standards Compliance	Filtration	Electrical Safety
	IEST-RP-CC001.3, USA IEST-RP-CC007, USA IEST-RP-CC034.1, USA	UL-61010-1, USA/Canada CAN/CSA-22.2, No.61010-1 EN-61010-1, Europe IEC61010-1, Worldwide

General Specifications, Ascent™ Max Containment Ventilated Enclosure			
Model	ADC-3F2 with STA-3A0-C	ADC-4F2 with STA-4A0-C	ADC-6F2 with STA-6A0-C
External Dimensions (W x D x H)	1035 x 736 x 1485 mm (40.7" x 29.0" x 58.5")	1340 x 736 x 1485 mm (52.8" x 29.0" x 58.5")	1950 x 736 x 1485 mm (76.8" x 29.0" x 58.5")
Internal Work Area (W x D x H)	965 x 596 x 765 mm (38.0" x 23.5" x 30.1")	1268 x 596 x 765 mm (50.0" x 23.5" x 30.1")	1880 x 596 x 765 mm (74.0" x 23.5" x 30.1")
Filtration System	Primary Filter	HEPA filter, typical efficiency of >99.99% at 0.3 microns, removes particulates and aerosols	
	Secondary Filter	HEPA filter, typical efficiency of >99.99% at 0.3 microns, removes particulates and aerosols	
Exhaust Ducting	Optional Exhaust Collar with 10" diameter. Not included as standard item		
Inflow Air Velocity	Initial Setpoint : 0.4 m/s or 80 fpm		
Air Volume	567 m³/h (334 cfm)		
Sound Emission	62 dBA		
LED Light Intensity at Zero Ambient	>800 Lux (>74 foot-candles)		
Hood Construction	Main Body	1.2 mm (0.05") 18 gauge electro-galvanized steel with white oven-baked epoxy-polyester Isocide™ antimicrobial powder coated finish	
	Side Walls	Polycarbonate	
	Work Top	Phenolic resin	

Engineering Drawing



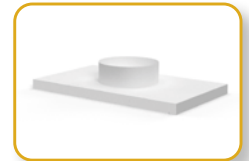
1. OPTIONAL exhaust collar with 10" diameter
2. Secondary HEPA filter
3. Esco Sentinel™ Silver Microprocessor
4. Hinged window
5. Duplex GFCI outlets (5A Max.)
6. Interchangeable stainless steel waste bag port
7. Blower

8. Electrical/ Electronics panel
9. Primary HEPA filter
10. LED lamp
11. Polycarbonate sides
12. Cable port
13. 4" Diameter waste chute
14. Phenolic resin worktop

Common Accessories



Ergonomic Lab Chair



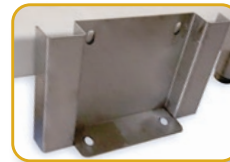
Exhaust Collar



IQ OQ



Foot Rest



Seismic Bracket



SPM Motorized Stand, 28-40" height